

Zone 1

**Report to the Zone Commissioners
Design and Construction Projects
for Calendar Year 2009**

By Dusty Williams, General Manager-Chief Engineer

January 2010

GENERAL:

Throughout the District (all Zones) during Calendar Year 2009, the Design and Construction Division completed four capital projects with a combined value of \$4.7 million. Two projects with a total contract value of \$8,500,000 are currently under construction. In Calendar Year 2009 the District also inspected and issued notices of completion for 20 developer-built projects with a total value of almost \$24 million.

Recent bids for District construction projects have shown that general contractors are becoming very competitive. The District will continue to try and leverage this dip in construction costs by pushing hard to complete designs and advertise projects while prices are low.

Twenty-five capital improvement projects in the FY 2009/2010 budget are either under active design or pre-design study at the District with five of those projects expected to be advertised for construction in Calendar Year 2010. The total construction contract cost of those five projects is estimated at around \$11 million. Another ten or so drainage projects are being managed by individual cities with the District participating in funding.

Additionally, we are also underway with six repair projects that require engineered drawings due to the severity of the damage or potential damage to our facilities. Deficiencies range from exposed and rusting rebar to undermined slope paving. As all in-house resources are devoted to our capital improvement projects, these six projects are being designed by outside consulting engineers.

Calendar Year 2010 should also see completion of significant changes at the District's office site. The proposed Low Impact Development (LID) Retrofit Project is a three part project. The completed project will convert the District's Market Street campus into a regional example of green development concepts. The upgraded facility will be used as a regional "green" training center for municipal employees, developers, engineers, and contractors throughout the Inland Empire and Orange County. Currently, there are limited locations and opportunities to demonstrate the proper application of LID BMPs. This facility is uniquely designed to accomplish both demonstration and monitoring of the effectiveness of LID practices. This project is intended to facilitate the support and implementation of LID BMPs by municipalities and developers. The cost of this project is being partially subsidized by a \$475,000 State Proposition 13 grant administered by SAWPA.

Following is a status summary of the capital improvement projects for Zone 1:

Current Year Capital Projects (Budgeted FY 2009/2010)

1. **Santa Ana River Mainstem (Corps Project) (1-8-00011-00)** - The \$420 million Seven Oaks Dam in San Bernardino County, built by the Corps of Engineers in partnership with the San Bernardino, Riverside and Orange County Flood Control Districts, was officially completed on November 15, 1999 and turned over to the Local Sponsors for operation and maintenance in October 2002. Funding for this project in the District's FY 2009/2010 Budget is for administration and the local share (5.27%) of the maintenance responsibility for the Dam.
2. **San Sevaine Channel, Stage 7 (1-8-00050-07)** - This project was officially completed on September 23, 2004 and is in the FY 2009/2010 Budget solely to track San Sevaine Industrial Park Sales Tax Revenue annually forwarded to the District by the County of Riverside, to partially offset project costs previously incurred by the District. The project is a large concrete channel that extends from Galena Street upstream to San Sevaine Way.
3. **Monroe MDP – Monroe Basin Rehabilitation (1-8-00071-03)** – Currently even very small runoff events shut down portions of the park within the basin bottom. This project consists of an upgraded low-flow channel, a containment berm, improved inlet-outlet structure and an additional access ramp. These improvements will increase the number of usable days per year in the park and reduce maintenance costs for both the City Parks Department and the District. This project was essentially completed in December 2009 and we will be issuing a notice of completion in January 2010.



Preconstruction

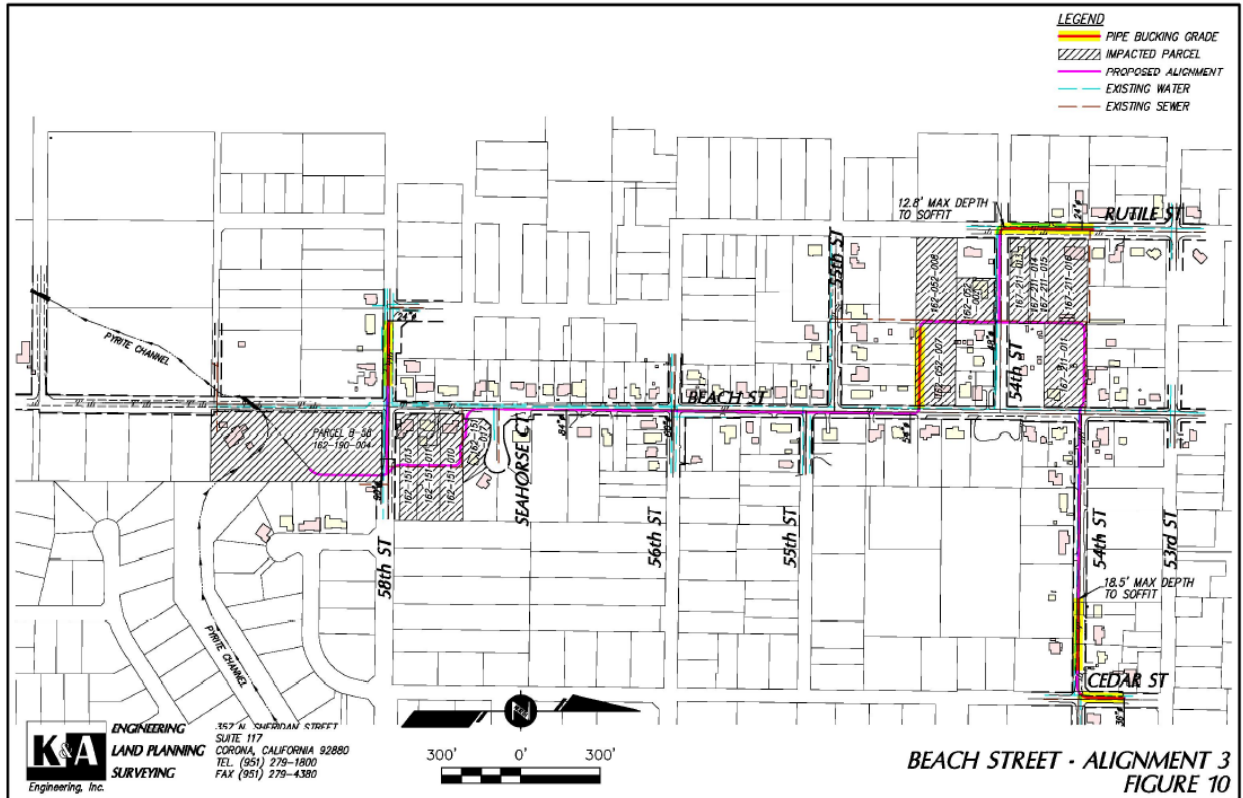


During Construction

4. **Monroe MDP – Monroe Channel Basin Rehabilitation (1-8-00071-04)** – Replacement of the City of Riverside's existing channel from Magnolia Avenue to California Avenue with an underground reinforced concrete box at the request of the City of Riverside. Mapping should be completed by June 2010.

5. **Pyrite Channel Bypass (1-8-00109-01)** – This project is an approximately 1,600 foot long low-flow diversion drain within Pyrite Avenue to collect flows from the District's existing concrete-lined Pyrite Channel and deliver them to the District's existing concrete-lined Jurupa Channel that parallels Jurupa Road. The hydraulic capacity of the diversion drain will be dictated by geometric constraints at utilities and the railroad. The project will not bypass the entire Q_{100} but will provide substantial relief to properties between Pyrite Street and Jurupa Avenue. The District is working with the Riverside County Redevelopment Agency to combine the storm drain project with their street replacement project to minimize cost and disruption to the public.

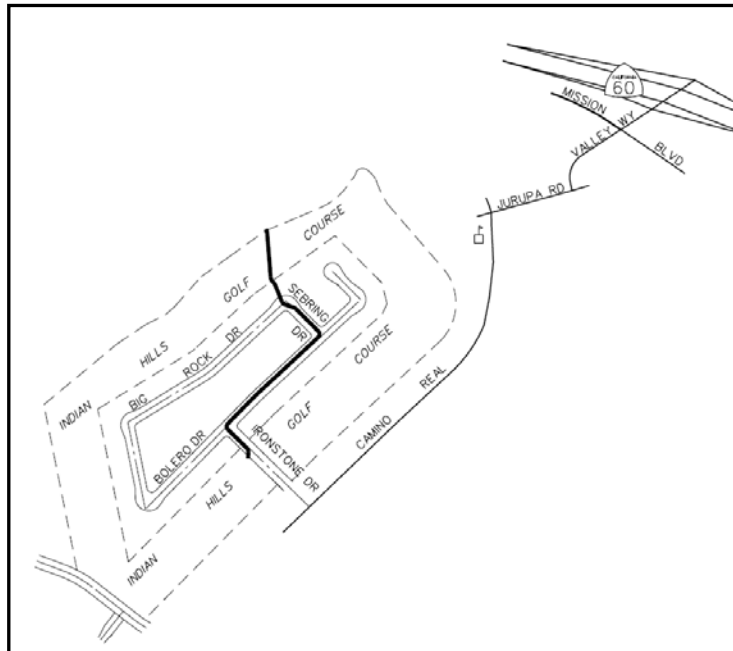
6. **Mira Loma – Beach Street Storm Drain (1-8-00137-01)** - This project is an underground storm drain extending upstream from the existing natural wash at 59th Street, north in Beach Street approximately 3,000 feet to 54th Street, then west in 54th to a sump in Rutile Street. The District issued a request for proposals to Civil Design Consulting Firms in mid-2008 and, after review of 13 responding proposals, interviewed the top four firms and eventually selected K&A Engineering, Inc. The proposal process was valuable in that it revealed the preliminary alignment has significant challenges and that alternate routes should be addressed via a formal "Preliminary Design Report" (PDR) as a first order of work in the design contract. The PDR is complete, and on December 9, 2009 a public meeting was held in the neighborhood to present its recommendations. As of January 2010, the plans are at the 30% stage. A detailed evaluation of the right-of-way requirements is now underway and it is likely that right-of-way acquisition will become a critical path for this project.



Alignment 3

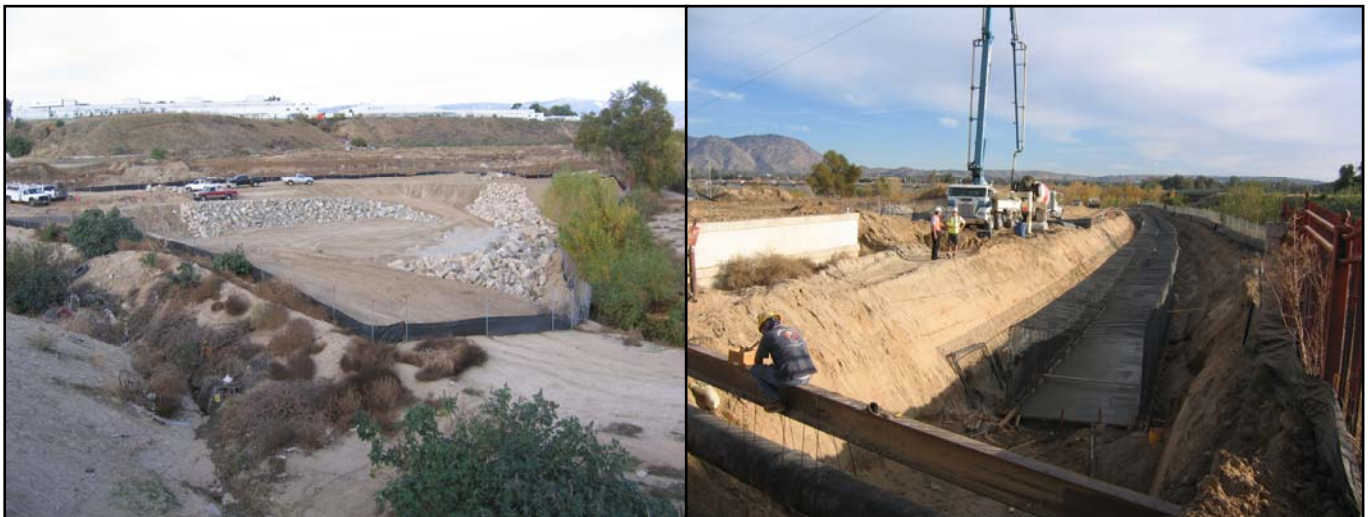
7. **Pedley Hills Bolero Drive Storm Drain (1-8-00138-01)**

This project is an underground storm drain extending upstream from an outlet at Ironstone Drive northeasterly to Sebring Drive and a collection point within the Indian Hills County Club Golf Course. This project is in the final design phase. The District Board will finalize CEQA in early 2010. Final right-of-way acquisition should be completed by spring 2010 and we should have this project under construction by early summer 2010.



8. **Belltown Market Street Storm Drain and Lateral B-1 (1-8-00148-01)** - This project is an underground storm drain extending from the Santa Ana River north in Market Street to the Riverside Canal, approximately 800 feet upstream of Rubidoux Boulevard. This six million dollar project began construction in late November 2009.

Market Street Storm Drain - Outlet to Santa Ana River under construction January 2010



9. **Mockingbird Canyon Debris Basin (1-8-00185-01)** – This project presumes a new debris basin south of Van Buren Boulevard and Pine Court to prevent debris from impacting Mockingbird Canyon Reservoir. A very preliminary study indicates about 8 acres of right-of-way total (need to acquire +/-1 acre) and a total project cost around \$3.5M. The feasibility study has begun; data collection and background information analysis are underway. Focus is on impact to the streambed between Van Buren Boulevard and the existing reservoir.

10. **Day Creek Channel, Stage 6 (1-8-00250-06)** - This project's upstream end is at the recently completed stage just below Limonite Boulevard. This project extends downstream to Lucretia Avenue where it daylights into the existing channel in the Goose Creek Golf Club. Progress this past year has been limited to work on the regulatory and permitting issues as well as fulfilling the requirements of the County's MSHCP. We have finalized the Lucretia crossing requirements in consultation with the Transportation Department. Completion of the plans and specifications will take about 2 to 3 man-months. This is a project that needs to be constructed during the summer months. If regulatory permits can be finalized, we are shooting for construction in spring/summer 2011.

P8\128735