

Zone 5

**Report to the Zone Commissioners
Design and Construction Projects
for Calendar Year 2011**

By Dusty Williams, General Manager-Chief Engineer
January 2012

GENERAL:

Throughout the District (all Zones) during Calendar Year 2011, the Design and Construction Division Issued Notices of Completion for four capital projects and three repair projects with a combined value of \$10 million. Surprisingly, despite the downturn in development activity, the District issued Notices of Completion for 20 developer-built projects with a total value of almost \$36 million during Calendar Year 2011. Many of these projects were "almost" finished at the end of the boom in 2008/2009 and are now being accepted as final punch-lists are finally completed. Two large projects in Zone 4, Paloma Wash in Menifee and the large storm drain associated with the "Sketchers" distribution facility in Moreno Valley accounted for nearly \$20 million of the \$36 million total.

With many project plan sets nearing completion at press time we expect to see a significant uptick in both the number of in-house CIP projects under construction and the total value to be constructed compared to Calendar Year 2011. We also have several other drainage projects being managed by individual cities with the District participating in funding.

Again, during this last year, bids for District construction projects have shown that general contractors are still making very competitive bids. The District will continue to try to leverage this dip in construction costs by pushing hard to complete designs and advertise projects while prices are low.

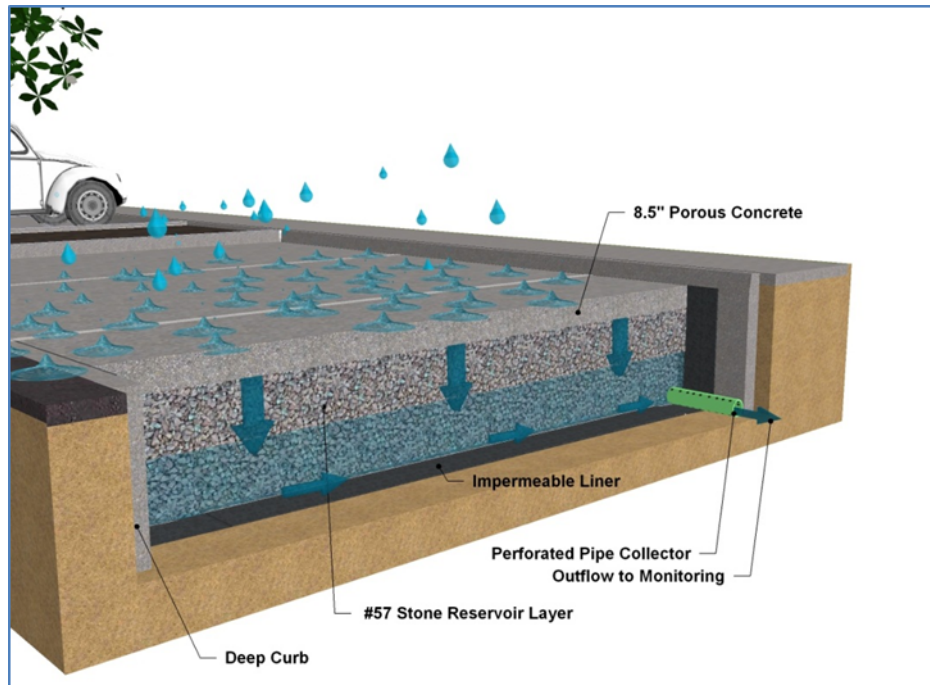
Additionally, we are also underway with a number of repair projects that require engineered drawings due to the severity of the damage or potential damage to our facilities. Deficiencies range from exposed and rusting rebar to undermined slope paving. Most of these projects were designed by outside consulting engineers. At press time for this report three separate projects along Palm Canyon Wash and Murrieta Line F repairs have been completed. The Arlington and La Sierra channel repairs are underway. Montgomery and Cabazon channel repairs are out to bid and another repair in the south Corona area will be out to bid in January. An additional project along the San Jacinto River Levee adjacent to the Soboba Tribe's holdings will follow early this year.

Calendar Year 2011 saw completion of significant changes at the District's office site. The completed Low Impact Development (LID) Retrofit Project consists of three parts converting the District's Market Street campus into a regional example of green development concepts. The upgraded facility will be used as a regional "green" training center for municipal employees, developers, engineers, and contractors throughout the Inland Empire and Orange County.

Currently, there are limited locations and opportunities to demonstrate the proper application of LID BMPs. This facility is uniquely designed to accomplish both demonstration and monitoring of the effectiveness of LID practices. This project is intended to facilitate the support and implementation of LID BMPs by municipalities and developers. The cost of this project was partially subsidized by a \$475,000 State Proposition 13 grant administered by SAWPA.



Centralized Monitoring Point for Low Impact Demonstration Project



Pervious Portland Cement Concrete

Following is a status summary of the capital improvement projects for Zone 5:

Current Year Capital Projects (Budgeted FY 2011/2012)

- **Montgomery Street Channel (5-8-00051-01)** - Budgeted for construction inspection only. The City of Banning intends to complete the developer abandoned project using performance bonds. At the request of the City, the District will assist by funding the construction inspection. The project has not yet begun; schedule is driven by the City.
- **Calimesa Line L, Stage 2 (5-8-00165-02)** - This is an extension of the existing Avenue L underground storm drain constructed in 2010, and will complete the Avenue L storm drain system. The proposed alignment meets the Stage 1 terminus near 4th Street and extends 6,400 feet east along Avenue L, where it turns north onto Douglas Street and extends an additional 690 feet. A major hurdle of this project involves permitting of the storm drain crossing of California Department of Water Resources 54" potable water mainline at the Avenue L and Bryant Street intersection.

90% complete plans were completed in fall 2011. We anticipate advertising the project for construction in late spring 2012.



- **Banning MDP Lines D-2 and D-2A (5-8-00169-01)** - This project is an underground storm drain that connects to the existing Ramsey Street Storm Drain at the intersection of Hargrave Street and Ramsey Street. Line D-2, Stage 1 will continue northerly along Hargrave Street for approximately 5,250 feet before terminating at Indian School Lane. Line D-2A, Stage 1 will tie into Line D-2 at the intersection of Hargrave Street and Theodore Street. Line D-2A will continue westerly along Theodore Street for approximately 600 feet before terminating at Florida Street.

Constraints for this project include the multitude of existing utilities on Hargrave Street and the downstream connection to the Ramsey Street Storm Drain.

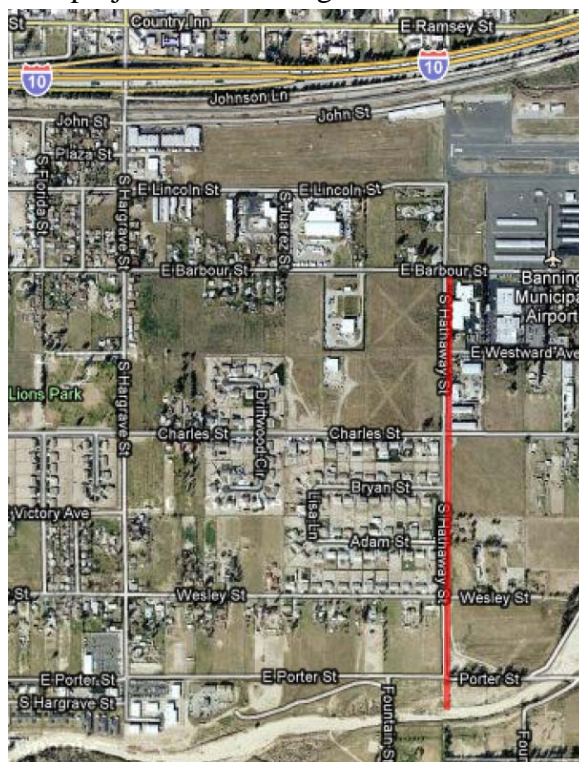
The Preliminary Environmental Assessment Report has been requested and the Project Charter has been completed. Completion of the Preliminary Design Report is anticipated in fall of 2012.



- Gilman Home Channel Lateral A, Stage 3 (5-8-00171-03)** - This project consists of two parts. The first part is upgrading the existing undersized storm drain in 4th Street from Williams Street to Nicolet Street and the second part consists of extending the existing Gilman Home Channel Lateral A, Stage 2 west in Cottonwood Road, north in 10th Street, west again in George Street then northwest along the East Gilman Home Wash (Channel). The project will cross 12th Street and end south of Wilson Street joining the existing East Gilman Home Wash. This project will allow the abandonment of an existing undersized manmade channel that bisects private property and eliminate the floodplain. Design work on this project has been contracted to a consulting engineering firm. The design work is scheduled to be completed by early spring 2012.



- **Banning MDP Line H, Stage 1 (5-8-00177-01)** - This project is an underground storm drain extending from Smith Creek north in Hathaway Street to Barbour Street. A consulting engineering firm has been selected and we are in the process of reviewing the consultant's proposal. The design work is anticipated to be completed by late fall 2012.



P8\143348